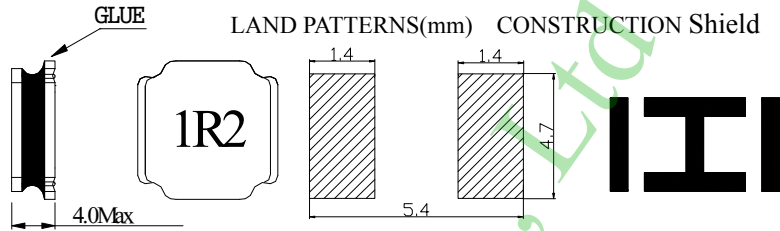
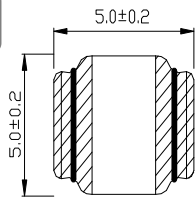


**Inductance Range: 1.0μH~100μH**  
**Temperature Range: -40℃~+125℃**

**PNR5040-Series**

### DIMENSIONS(mm)



### FEATURES:

- ★Quantity / Reel:1500pcs
- ★Small products, Quadrate 5.0mm Max, Height 4.0mm Max.
- ★The use of carrier tape package for SMT reflow soldering process
- ★Widely use in DC-DC converter/LCD TV/Notebook/  
PDA/MP3 & MP4 player/Digital camera/DVD etc.
- ★Design to customer requirement

### RoHS Compliant(SGS Certified Result)

Pb	Cd	Cr+6	PBBs	PBDEs
<1000ppm	ND	ND	ND	ND

### Electrical Characteristics:

Part Number	Test Condition	Inductance (μH)	Tolerance (%)	D.C.R(Ω) Max.	Rated Current(A)
PNR50401R0M	100KHz/0.3V	1.0	±30	12m	7.35
PNR5040-1R5M	100KHz/0.3V	1.5	±30	15m	6.3
PNR5040-2R2M	100KHz/0.3V	2.2	±30	19m	4.9
PNR5040-2R7M	100KHz/0.3V	2.7	±30	22m	4.3
PNR5040-3R3M	100KHz/0.3V	3.3	±30	24m	3.95
PNR5040-3R9M	100KHz/0.3V	3.9	±30	27m	3.55
PNR5040-4R7M	100KHz/0.3V	4.7	±30	30m	3.5
PNR5040-6R8M	100KHz/0.3V	6.8	±20	43m	2.9
PNR5040-100K_M	100KHz/0.3V	10	±20	64m	2.35
PNR5040--150K_M	100KHz/0.3V	15	±20	86m	2
PNR5040-220K_M	100KHz/0.3V	22	±20	129m	1.6
PNR5040-330K_M	100KHz/0.3V	33	±20	188m	1.3
PNR5040-470K_M	100KHz/0.3V	47	±20	272m	1.1
PNR5040-680K_M	100KHz/0.3V	68	±20	400m	0.9
PNR5040-101K_M	100KHz/0.3V	100	±20	560m	0.75

- 1、 Inductance is measured with a LCR meter:HP4284A & 3532-50 or equivalent.
- 2、 D.C .R is measured with a Digital Multimeter TH2512B or equivalent.
- 3、 The Isat is the current at which the inductance decreases by 30% from the initial value
- 4、 The Irms by Stand-Type is the current at which the temperature rise is  $\Delta T \leq 40^\circ\text{C}$ , whichever ( $T_a = 20^\circ\text{C}$ )